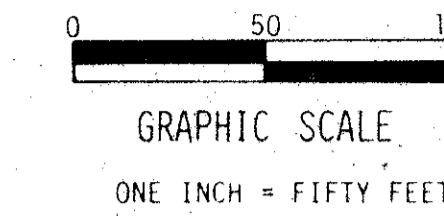
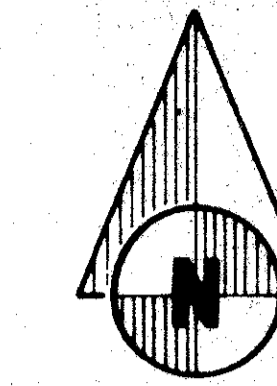


# A PLANNED UNIT DEVELOPMENT

## LUCERNE LAKES HOMES, VILLAGE I, 4<sup>th</sup> ADDITION

BEING A REPLAT OF A PORTION OF BLOCK  
29 OF PALM BEACH FARMS COMPANY, PLAT NO. 3,  
PLAT BOOK 2, PAGES 45 THRU 54, PUBLIC  
RECORDS, PALM BEACH COUNTY, FLORIDA,  
LYING IN SECTION 28, TWP. 44S., RGE. 42E.,  
PALM BEACH COUNTY, FLORIDA.

SHEET 2 OF 2



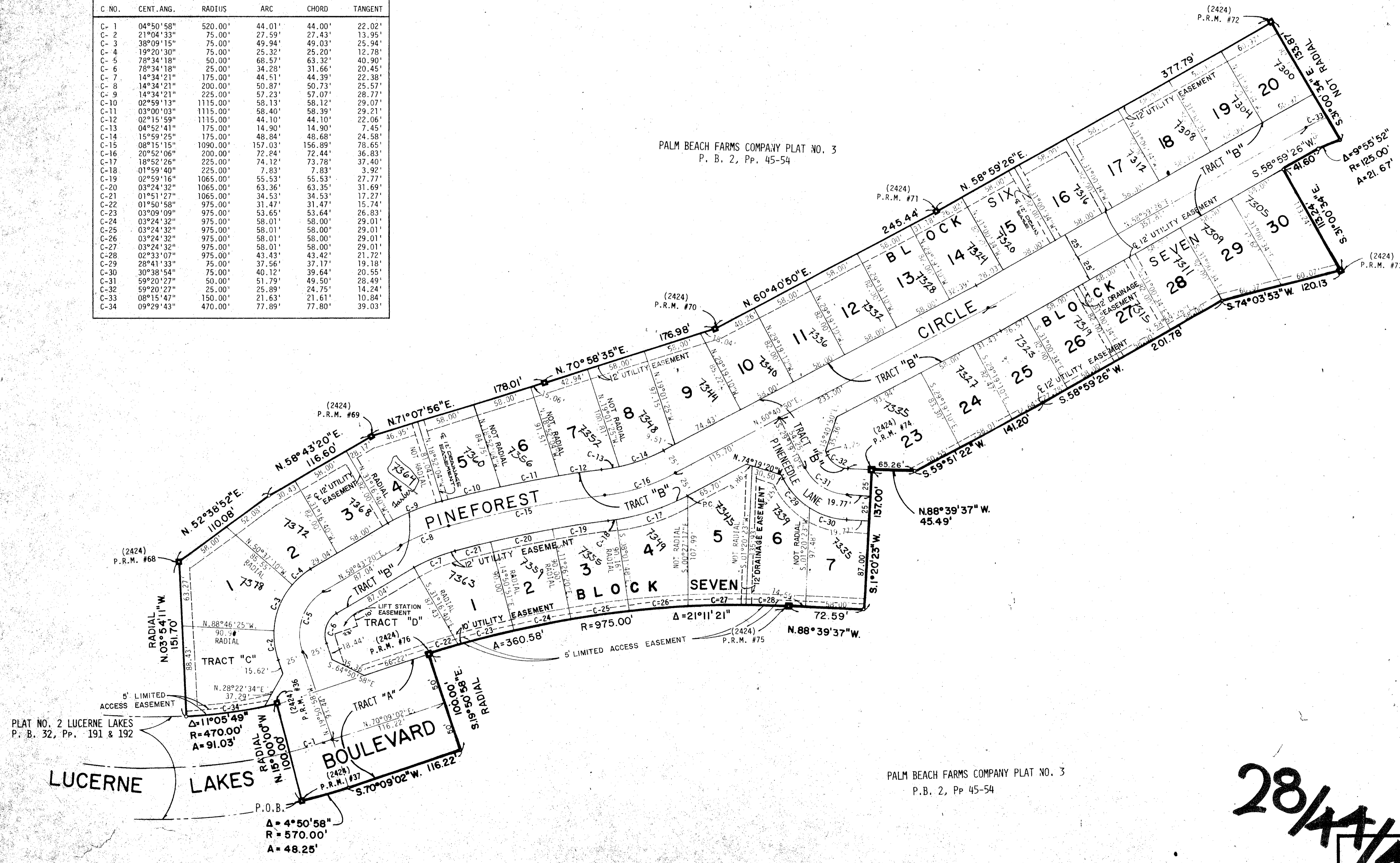
152

STATE OF FLORIDA  
COUNTY OF PALM BEACH

THIS PLAT WAS FILED FOR  
RECORD AT \_\_\_\_\_ M.  
THIS \_\_\_\_\_ TH DAY OF \_\_\_\_\_  
AD, 1978 AND DULY RE-  
CORDED IN PLAT BOOK  
ON PAGES \_\_\_\_\_ AND \_\_\_\_\_

JOHN B. DUNKLE, CLERK  
CIRCUIT COURT  
BY: \_\_\_\_\_ DC

CURVE DATA				
C. NO.	CENT. ANG.	RADIUS	ARC	TANGENT
C-1	04°50'58"	520.00'	44.01'	44.00'
C-2	21°04'33"	75.00'	27.59'	27.43'
C-3	38°09'15"	75.00'	49.94'	49.03'
C-4	19°20'30"	75.00'	25.32'	25.20'
C-5	78°34'18"	50.00'	68.57'	63.32'
C-6	78°34'18"	25.00'	34.28'	31.66'
C-7	14°34'21"	175.00'	44.51'	44.39'
C-8	14°34'21"	200.00'	50.87'	50.73'
C-9	14°34'21"	225.00'	57.23'	57.07'
C-10	02°59'13"	1115.00'	58.13'	58.12'
C-11	03°00'03"	1115.00'	58.40'	58.39'
C-12	02°15'59"	1115.00'	44.10'	44.10'
C-13	04°52'41"	175.00'	14.90'	14.90'
C-14	15°59'25"	175.00'	48.84'	48.68'
C-15	08°15'15"	1090.00'	157.03'	156.89'
C-16	20°52'06"	200.00'	72.84'	72.44'
C-17	18°52'26"	225.00'	74.12'	73.78'
C-18	01°59'40"	225.00'	7.83'	7.83'
C-19	02°59'16"	1065.00'	55.53'	55.53'
C-20	03°24'32"	1065.00'	63.36'	63.35'
C-21	01°51'27"	1065.00'	34.53'	34.53'
C-22	01°50'58"	975.00'	31.47'	31.47'
C-23	03°09'09"	975.00'	53.65'	53.64'
C-24	03°24'32"	975.00'	58.01'	58.00'
C-25	03°24'32"	975.00'	58.01'	58.00'
C-26	03°24'32"	975.00'	58.01'	58.00'
C-27	03°24'32"	975.00'	58.01'	58.00'
C-28	02°33'07"	975.00'	43.43'	43.42'
C-29	28°41'33"	75.00'	37.56'	37.17'
C-30	30°38'54"	75.00'	40.12'	39.64'
C-31	59°20'27"	50.00'	51.79'	49.50'
C-32	59°20'27"	25.00'	25.89'	24.75'
C-33	08°15'47"	150.00'	21.63'	21.61'
C-34	09°29'43"	470.00'	77.89'	77.80'



PALM BEACH FARMS COMPANY PLAT NO. 3  
P. B. 2, Pp. 45-54

LOT SUMMARY	
(BLOCK SIX)	
LOT 1	7,887 S.F. or 0.18 AC.
LOT 2	5,610 S.F. or 0.13 AC.
LOT 3	4,756 S.F. or 0.11 AC.
LOT 4	5,411 S.F. or 0.12 AC.
LOT 5	4,793 S.F. or 0.11 AC.
LOT 6	5,097 S.F. or 0.12 AC.
LOT 7	5,598 S.F. or 0.13 AC.
LOT 8	5,828 S.F. or 0.13 AC.
LOT 9	5,989 S.F. or 0.14 AC.
LOT 10	4,785 S.F. or 0.11 AC.
LOT 11	4,999 S.F. or 0.11 AC.
LOT 12	4,999 S.F. or 0.11 AC.
LOT 13	4,999 S.F. or 0.11 AC.
LOT 14	4,855 S.F. or 0.11 AC.
LOT 15	4,999 S.F. or 0.11 AC.
LOT 16	4,999 S.F. or 0.11 AC.
LOT 17	4,999 S.F. or 0.11 AC.
LOT 18	4,999 S.F. or 0.11 AC.
LOT 19	4,999 S.F. or 0.11 AC.
LOT 20	4,999 S.F. or 0.11 AC.
TRACT "B"	7,377 S.F. or 0.17 AC.
TOTAL	111,028 S.F. or 2.55 AC.
(BLOCK SEVEN)	
LOT 1	5,933 S.F. or 0.14 AC.
LOT 2	5,462 S.F. or 0.13 AC.
LOT 3	5,462 S.F. or 0.13 AC.
LOT 4	6,204 S.F. or 0.14 AC.
LOT 5	7,386 S.F. or 0.17 AC.
LOT 6	7,012 S.F. or 0.16 AC.
LOT 7	5,176 S.F. or 0.12 AC.
LOT 23	8,245 S.F. or 0.19 AC.
LOT 24	4,807 S.F. or 0.11 AC.
LOT 25	4,863 S.F. or 0.11 AC.
LOT 26	4,756 S.F. or 0.11 AC.
LOT 27	4,756 S.F. or 0.11 AC.
LOT 28	4,756 S.F. or 0.11 AC.
LOT 29	5,209 S.F. or 0.12 AC.
LOT 30	6,115 S.F. or 0.14 AC.
TRACT "C"	8,192 S.F. or 0.19 AC.
TOTAL	94,339 S.F. or 2.17 AC.

0277-308

28/44/12

34

152

BENCH MARK

Surveying and Mapping, Inc.

THIS INSTRUMENT WAS PREPARED BY ROBERT J. WHIDDEN IN THE OFFICES OF BENCH MARK LAND SURVEYING AND MAPPING, INC., 2300 PALM BEACH LAKES BLVD., SUITE 109, WEST PALM BEACH, FLORIDA, PHONE 689-2111.

DRAWN	FIELD BOOK	DATE	JOB NO.	SHEET
RJW	NO PG		2405	2 OF 2
DESIGNED	CHECKED	SCALE	DRAWING NO.	
RJW	RJW	1"=50'		